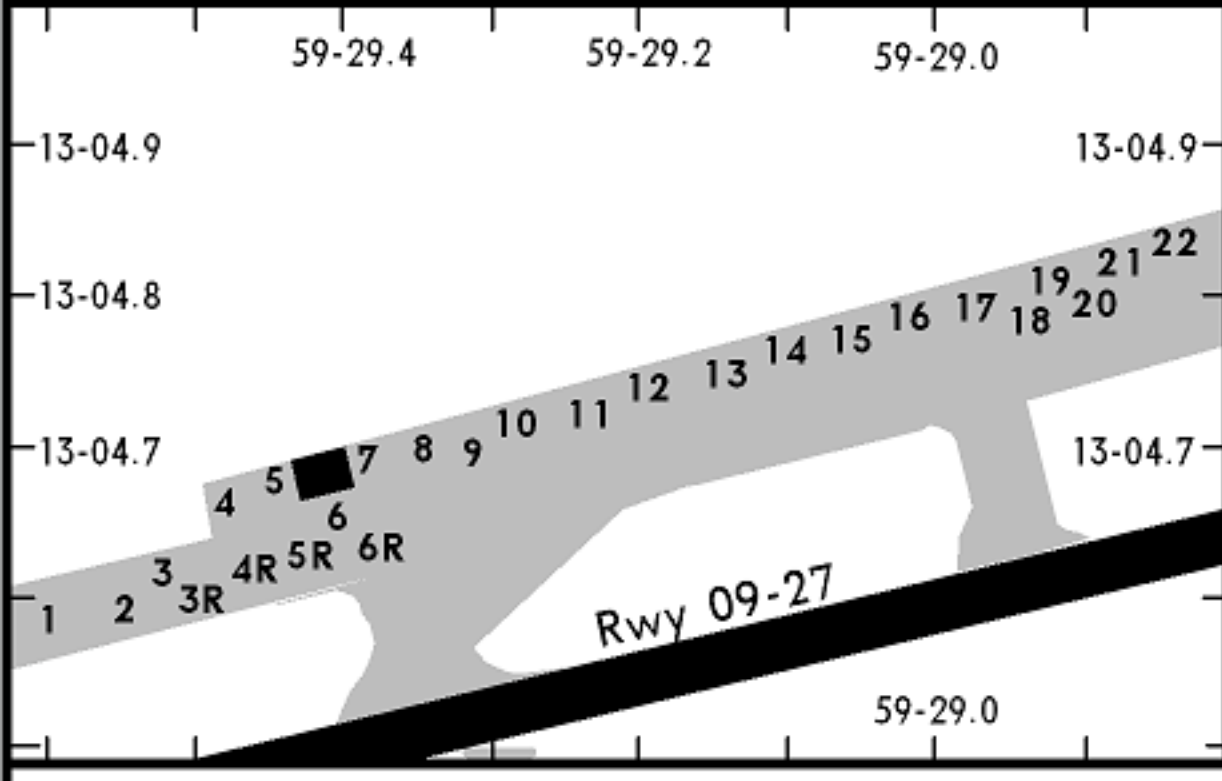
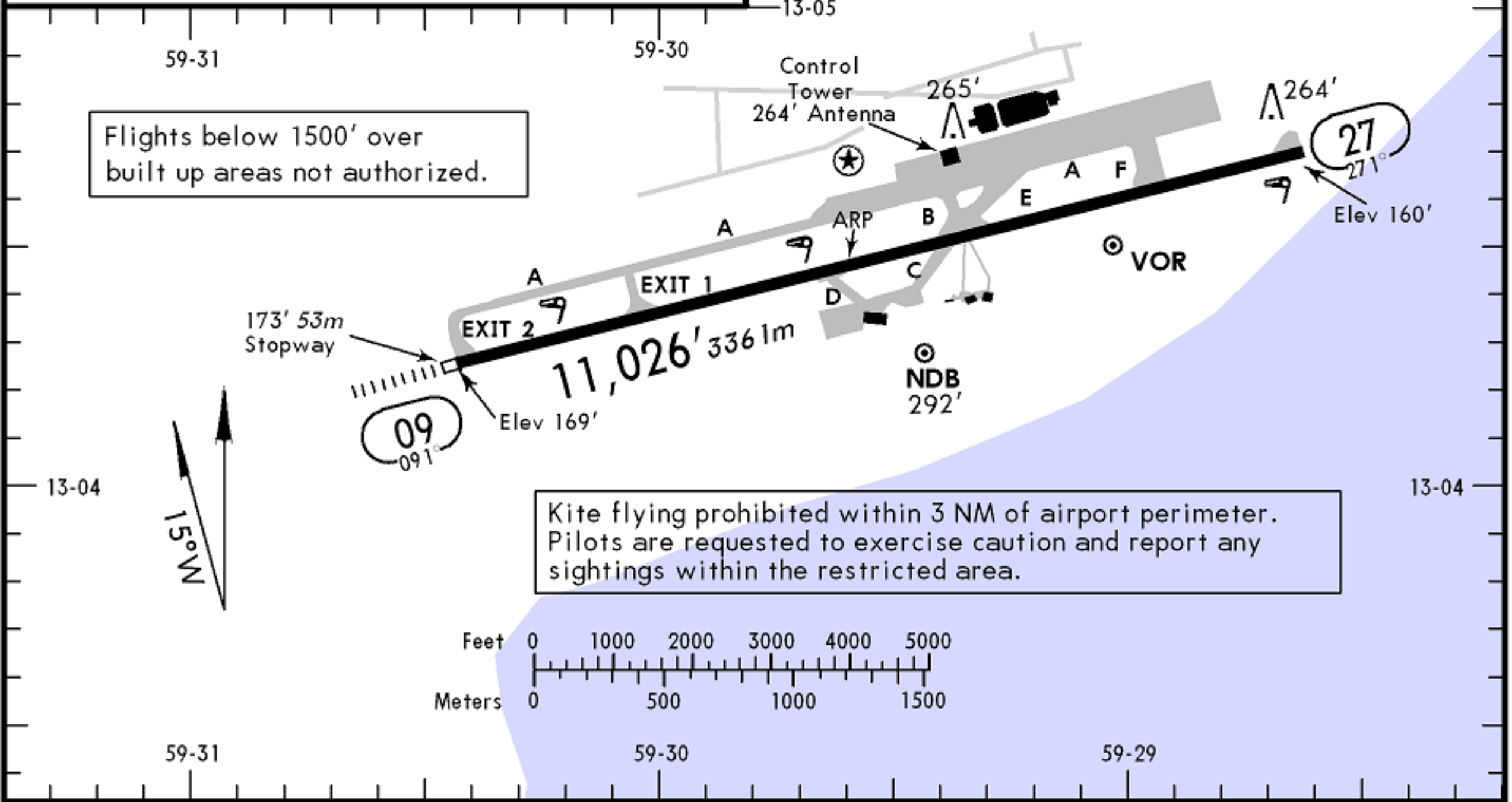


ATIS 132.72	ADAMS Ground 121.9	Tower 118.7
-----------------------	------------------------------	-----------------------



POSITION NO.	COORDINATES
1	N13 04.6 W059 29.6
2, 3, 3R	N13 04.6 W059 29.5
4, 4R	N13 04.7 W059 29.5
5, 5R	N13 04.7 W059 29.5
6, 6R, 7, 8	N13 04.7 W059 29.4
9 thru 11	N13 04.7 W059 29.3
12, 13	N13 04.8 W059 29.2
14 thru 16	N13 04.8 W059 29.1
17 thru 19	N13 04.8 W059 29.0
20 thru 22	N13 04.8 W059 28.9



ADDITIONAL RUNWAY INFORMATION

RWY		USABLE LENGTHS			WIDTH
		Threshold	Landing Beyond Glide Slope	TAKE-OFF	
09	HIRL (50m) ① CL HIALS PAPI-L (angle 3.0°) grooved		10043' 3061m		148'
27	HIRL (50m) ① CL PAPI-L (angle 3.0°) grooved				45m

① (30m) spacing white

TAKE-OFF

	AIR CARRIER (JAA)		AIR CARRIER (FAR 121)	
	RL & CL	RCLM (DAY only) or RL	All Rwys Adequate Vis Ref	
A			2 Eng	
B	200m	250m	3 & 4 Eng	400m
C				
D	250m	300m		